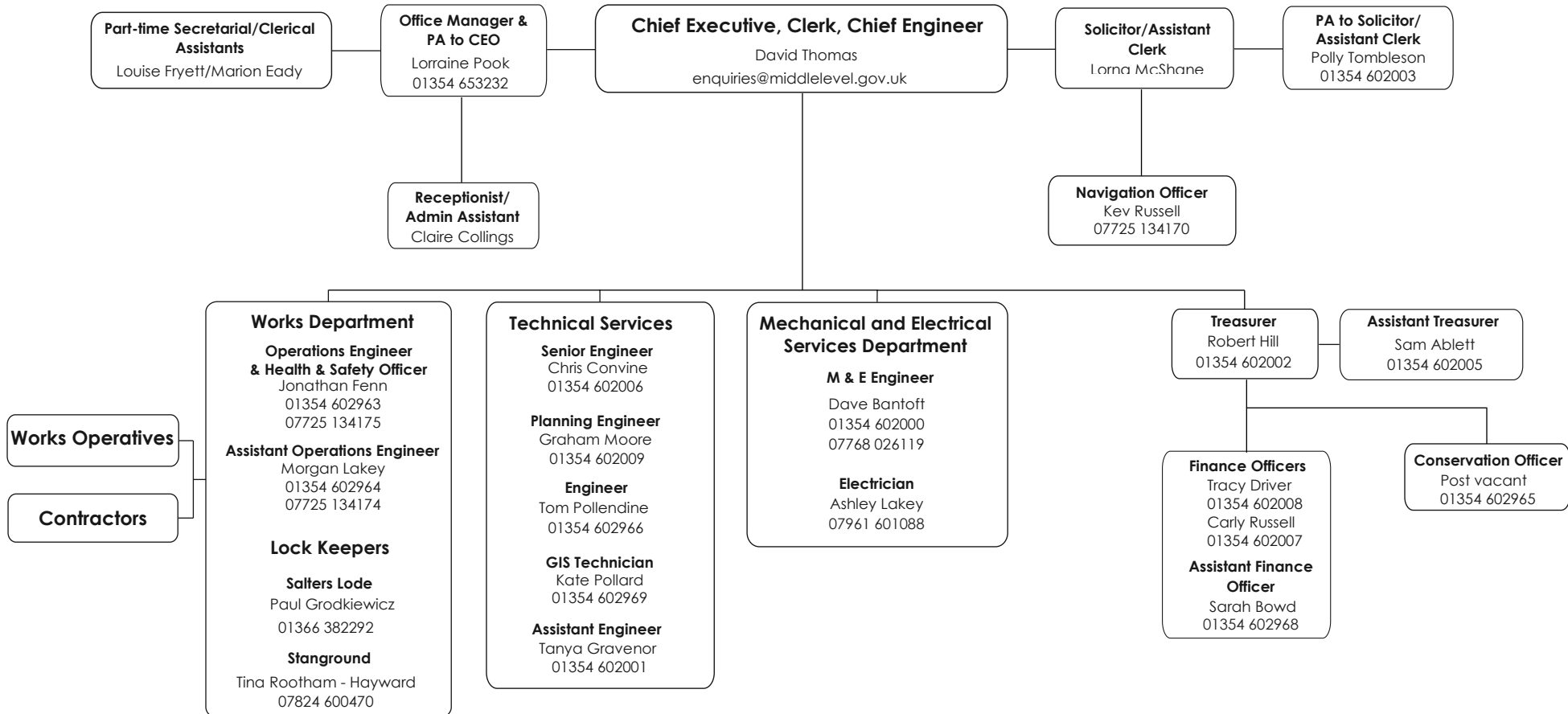




# Middle Level Commissioners | Staff Structure



For general queries the following information may be of assistance:  
**Main Office:** 01354 653232  
**Emergency out of office hours:** 01354 653232 then press "5"  
**Planning enquiries:** [planningmatters@middlelevel.gov.uk](mailto:planningmatters@middlelevel.gov.uk)  
**Engineering & works related enquiries:** [engineers@middlelevel.gov.uk](mailto:engineers@middlelevel.gov.uk)  
**Conservation enquiries:** Peter Beckenham - 01354 602965

**Health and Safety Consultants**  
 Croner  
 (Wolter Kluwer UK Ltd)  
 Cope Safety Management